

# HEAVY DUTY TURBINE "SILENT" PNEUMATIC VIBRATORS



- Heavy Duty Series, High Force Output
- Threaded Exhaust Port
- Large Bearings for Long Service Life
- Outlasts Piston Vibrators 3 to 1
- Quiet, Meets OSHA Standards
- No Lubrication Required
- Call for High Speed / High Temp / High Amplitude

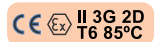
**SERIES BVS** - VIBCO offers 9 models in the extra heavy duty BVS series. The use of *non-lubricated* air supply makes the BVS turbine vibrators perfect for applications in food and pharmaceutical (etc.) industries where oil exhaust would be objectionable. Exhaust port is threaded for piping off of air exhaust in closed, sanitized systems. Extra large amplitudes and a wide range of sizes makes the BVS's ideal for quickly moving parts or materials. Casting for the BVS-60 or BVS-130 can be ordered in Aluminum or Malleable Iron. **Ask for Catalog #9127**



With its high force output, a BVS unit can easily move tough industrial materials in sturdy hoppers like the BVS 160 shown above. The air fitting on top helps with the flow.



## Technical Data

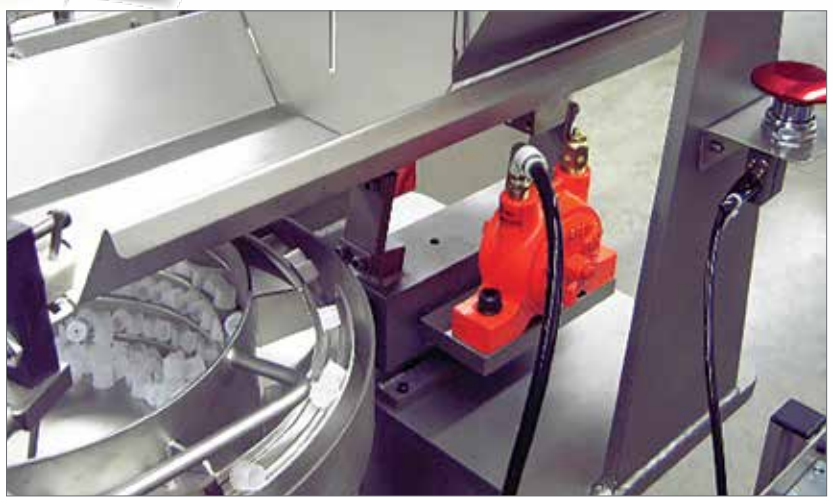
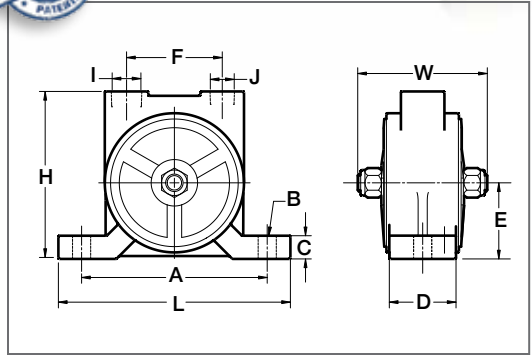


Model	Weight		60 PSI (4 Bar)				80 PSI (5.5 Bar)				Sound*	Max. Weight** of Material in Bin Slope Area	
	lbs.	kg.	Vibration per min.	Cubic ft. per min.	Centrifugal Force		Vibration per min.	Cubic ft. per min.	Centrifugal Force			lbs.	kg.
BVS-60	0.4	0.2	10,000	2.5	20	90	—	—	—	—	66	200	90
BVS-130	0.6	0.3	7,500	2.5	45	195	10,500	5.5	75	335	67	750	340
BVS-160	3.0	1.4	9,500	4.0	120	530	12,000	7.0	160	710	70	1,600	725
BVS-190	3.5	1.6	7,000	6.0	160	710	12,000	7.5	270	1,200	71	2,700	1,230
BVS-250	5.3	2.4	7,000	6.0	250	1,110	12,000	7.5	480	2,135	72	4,800	2,180
BVS-320	8.0	3.6	5,000	12.0	395	1,750	6,000	15.5	600	2,670	70	6,000	2,730
BVS-380	13.1	6.0	4,200	13.0	545	2,415	5,600	16.5	670	2,980	74	6,700	3,845
BVS-510	16.0	7.3	5,200	16.0	710	3,165	6,600	20.5	900	4,005	77	9,000	4,080
BVS-570	23.0	10.4	2,800	23.5	850	3,790	4,000	29.5	1,050	4,670	83	10,500	4,775
BVST-4400	22.0	10.0	11,000	28.0	2,700	12,010	12,500	30.0	3,500	15570	92	35,000	15,875

\* Decibel from A-scale at 1 meter and 80 PSI (or maximum listed value)  
 \*\* Rule of thumb for sizing: One lb. vibrator force to each 10 lbs. of bin content at 80 PSI (or maximum listed value)

NOTE: • Data obtained on laboratory test block  
 • Frequency and force will decrease on less rigid mount  
 • Data subject to design changes

# VIBCO BVS SERIES THREADED EXHAUST PORT



Right: VIBCO's standard finish is shown but the BVS is also available in a variety of food-grade and sanitary finishes like bakers enamel and poly (stainless steel and aluminum models are available) and plastic.

## Dimensions

Model	L		W		H		A**		B*		C		D		E		F		I	J
	in.	mm	in.	mm	in.	mm	in.	mm	in.	mm	in.	mm	in.	mm	in.	mm	in.	mm	NPT	NPT
BVS-60	3-13/16	97	1-5/8	41	2-7/16	62	3	76	1/4	6	5/8	16	3/4	19	1-3/16	30	1-1/4	32	1/8	1/8
BVS-130	4-7/8	124	1-7/8	48	2-5/8	67	4	102	3/8	10	5/8	16	7/8	22	1-1/4	32	1-7/16	37	1/8	1/4
BVS-160	5-1/2	140	2-7/8	73	3-5/8	93	4	102	3/8	10	9/16	14	1-3/8	35	1-11/16	43	1-7/8	48	1/4	3/8
BVS-190	5-1/4	133	3-1/16	81	3-7/16	87	4	102	3/8	10	7/8	22	1-5/16	33	1-9/16	40	1-7/8	48	1/4	3/8
BVS-250	6-3/4	171	3-9/16	90	3-15/16	100	5	127	1/2	13	7/8	22	1-3/8	35	1-7/8	48	2-5/16	59	1/4	3/8
BVS-320	6-3/4	171	4	102	4-7/8	124	5	127	1/2	13	1-1/8	29	1-5/8	41	2-1/4	57	2-3/4	70	3/8	1/2
BVS-380	7-15/16	202	4-3/4	121	5-13/16	148	6	152	5/8	16	1-1/8	29	2	51	2-11/16	68	3	76	3/8	1/2
BVS-510	8-15/16	227	4-3/4	121	5-3/4	146	7	178	5/8	16	1-1/4	32	2-1/4	57	2-9/16	65	3-7/16	87	1/2	3/4
BVS-570	10-3/16	259	5-7/16	138	7-1/4	184	8	203	3/4	19	1	25	2-15/16	75	3-5/16	84	4-3/16	106	3/4	1
BVST-4400	10-3/16	259	5-7/16	138	7-1/4	184	8	203	3/4	19	1	25	2-15/16	75	3-5/16	84	4-3/16	106	3/4	1

\* Max. mounting bolt diameter  
 \*\* Alternate bolt patterns available. Consult factory.

NOTE: • Material, Dimensions & Data subject to change without notice  
 • Dimensions ±1/16"  
 • Engineered dimensional drawings available on request